

65m - 2.500kg

60m - 3.000kg

55m - 3.500kg

50m - 4.000kg

48m - 4.200kg

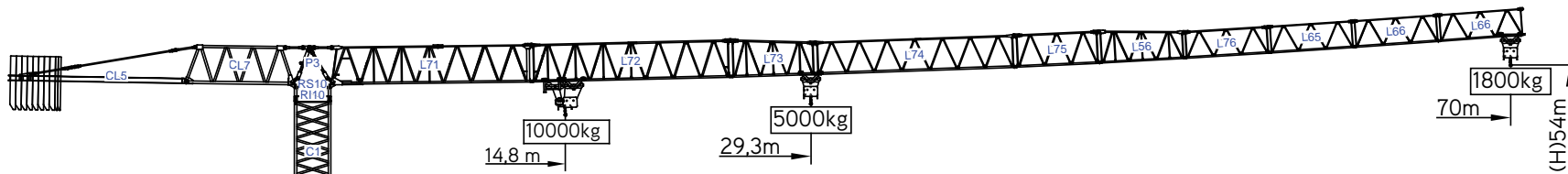
43m - 4.500kg

38m - 5.000kg

36m - 5.000kg

31m - 5.600kg

26m - 6.600kg



Cargas.Loads.Lasten.Charges.Cargas.Carichi.Yükler. ГРУЗОПОДЪЕМНОСТЬ

Icon	Diagram	Kg/m M/KIT	m	kg	Capacity (kg)													
					16	21	26	31	36	38	43	48	50	55	60	65	70	
18000 kg 8x2000 + 2x1000 kg	70m	L71+L72+L73+L74+L75 L56+L76+L65+L66+L66	29,3 m	5000	5000	5000	4710	3990	3750	3260	2870	2730	2440	2190	1990	1800		
18000 kg 8x2000 + 2x1000 kg	65m	L71+L72+L73+L74+L75 L56+L76+L65+L66	35,5 m	5000	5000	5000	5000	4940	4650	4050	3580	3410	3060	2760	2500			
17000 kg 8x2000 + 1x1000 kg	60m	L71+L72+L73+L74+L75 L56+L76+L65	38,2 m	5000	5000	5000	5000	5000	4400	3890	3720	3330	3000					
17000 kg 8x2000 + 1x1000 kg	55m	L71+L72+L73+L74+L75 L56+L76	40 m	5000	5000	5000	5000	5000	4640	4100	3920	3500						
16000 kg 8x2000 kg	50m	L71+L72+L73+L74+L75 L56	40,9 m	5000	5000	5000	5000	5000	4760	4200	4000							
14000 kg 7x2000 kg	48m	L71+L72+L73+L75+L56 L76+L65	41 m	5000	5000	5000	5000	5000	4800	4200								
12000 kg 6x2000 kg	43m	L71+L72+L73+L75+L56 L76	39 m	5000	5000	5000	5000	5000	4500									
11000 kg 5x2000 + 1x1000 kg	38m	L71+L72+L73+L75+L56	38 m	5000	5000	5000	5000	5000										
9000 kg 4x2000+1x1000 kg	36m	L71+L73+L75+L56+L76 L65	37,3 m	5000	5000	5000	5000	5000										
8000 kg 4x2000 kg	31m	L71+L73+L75+L56+L76	36,6 m	5000	5000	5000	5000											
7000 kg 3x2000+1x1000 kg	26m	L71+L73+L75+L56	35,5 m	5000	5000	5000												

